

# Big Red- $\Delta$ 6

Lab 5b-Color Wheel 2



Ceramic  
Materials  
Workshop

[ceramicmaterialsworkshop.com](http://ceramicmaterialsworkshop.com)

# Big Red

Original

070822-1

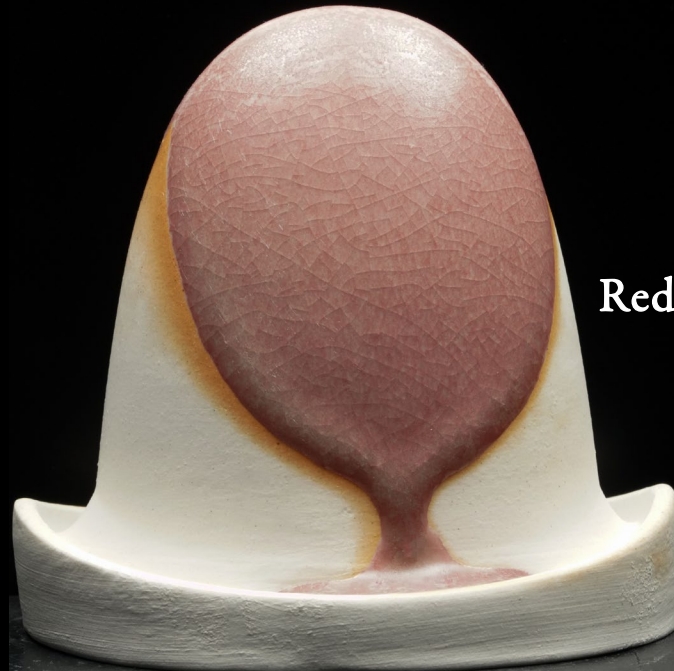
G200 EU	23.37
Whiting	27.11
EPK	11.17
Flint	12.73
3134	25.62
Chrome Oxide	0.10
Tin Oxide	8.00
Water	60



1-3 Second Dip



2-3 Second Dips



Reduction



Oxidation

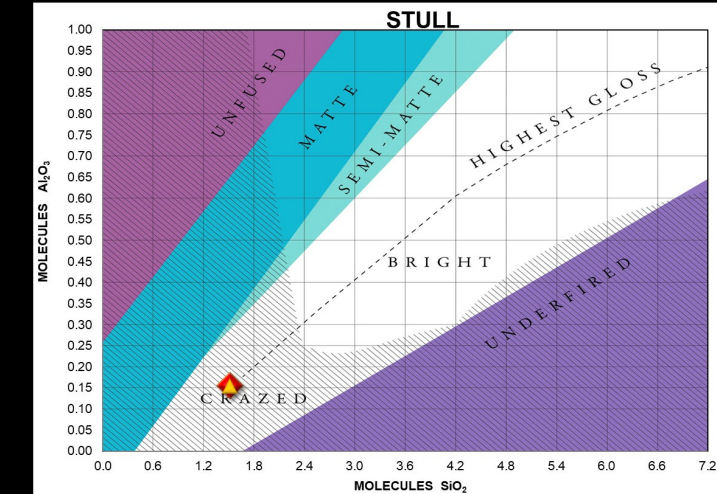


Ceramic  
Materials  
Workshop

ceramicmaterialsworkshop.com

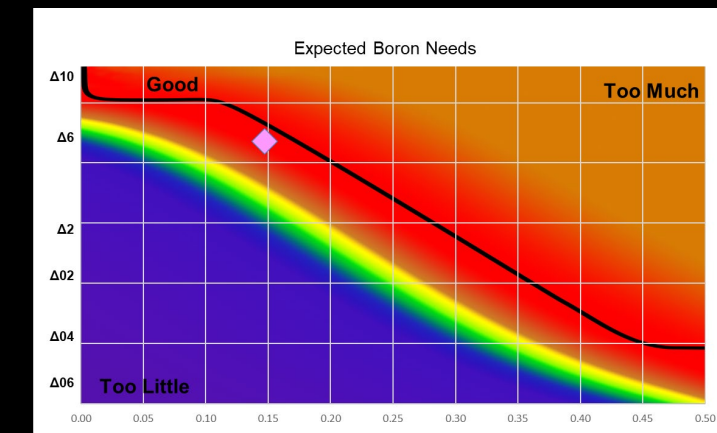
UMF

SiO <sub>2</sub> :Al <sub>2</sub> O <sub>3</sub> Ratio 9.75 : 1		Alkali Metals 0.17		Alkaline Earths 0.83	
SiO <sub>2</sub> 1.69	Collective "Al <sub>2</sub> O <sub>3</sub> " 0.17	Na <sub>2</sub> O 0.11	K <sub>2</sub> O 0.06	MgO 0.00	CaO 0.82
B <sub>2</sub> O <sub>3</sub> 0.16	Al <sub>2</sub> O <sub>3</sub> 0.17	Li <sub>2</sub> O	CuO	SrO	BaO
TiO <sub>2</sub> 0.00	NiO	Bi <sub>2</sub> O <sub>3</sub>	SnO <sub>2</sub>	ZnO	FeO 0.00
Cr <sub>2</sub> O <sub>3</sub>	ZrO <sub>2</sub>	P <sub>2</sub> O <sub>5</sub>		MnO <sub>2</sub>	CoO

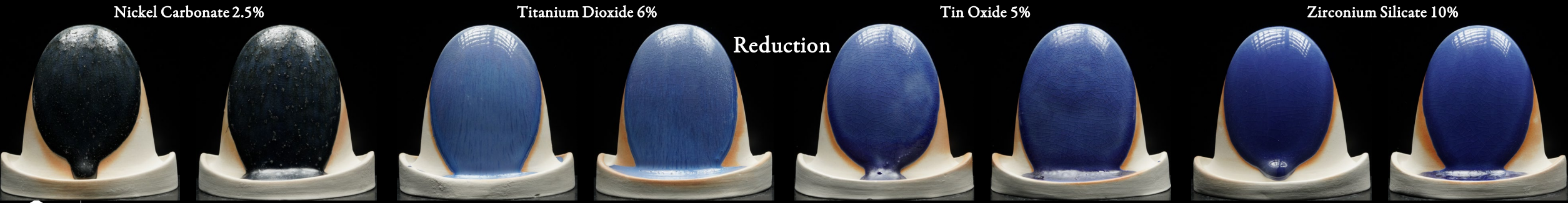
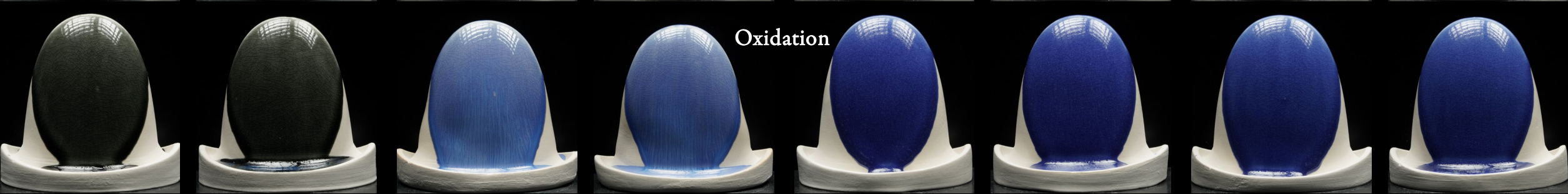
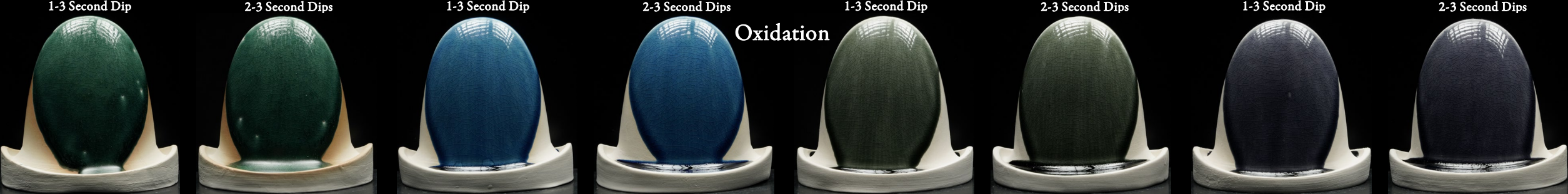


EUMF

SiO <sub>2</sub> :Al <sub>2</sub> O <sub>3</sub> Ratio 9.75 : 1		Alkali Metals 0.26		Alkaline Earths 0.74	
SiO <sub>2</sub> 1.52	Collective "Al <sub>2</sub> O <sub>3</sub> " 0.16	Na <sub>2</sub> O 0.10	K <sub>2</sub> O 0.05	MgO 0.00	CaO 0.74
B <sub>2</sub> O <sub>3</sub> 0.15	Al <sub>2</sub> O <sub>3</sub> 0.15	Li <sub>2</sub> O	CuO	SrO	BaO
TiO <sub>2</sub> 0.00	NiO	Bi <sub>2</sub> O <sub>3</sub>	SnO <sub>2</sub> 0.10	ZnO	FeO 0.00
Cr <sub>2</sub> O <sub>3</sub> 0.00	ZrO <sub>2</sub>	P <sub>2</sub> O <sub>5</sub>		MnO <sub>2</sub>	CoO







Ceramic  
Materials  
Workshop

# Cobalt Carbonate 1%

[ceramicmaterialsworkshop.com](http://ceramicmaterialsworkshop.com)



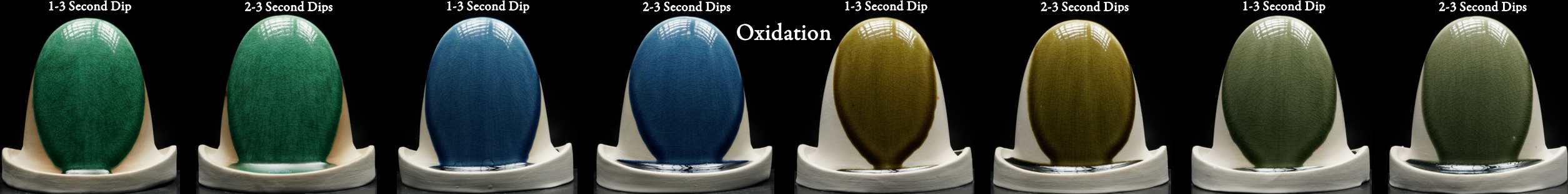


Ceramic  
Materials  
Workshop

# Chrome Oxide 1%

[ceramicmaterialsworkshop.com](http://ceramicmaterialsworkshop.com)





Chrome Oxide 1%

Cobalt Carbonate 1%

Red Iron Oxide 6%

Manganese Dioxide 3%



Reduction



Nickel Carbonate 2.5%

Titanium Dioxide 6%

Tin Oxide 5%

Zirconium Silicate 10%



Reduction

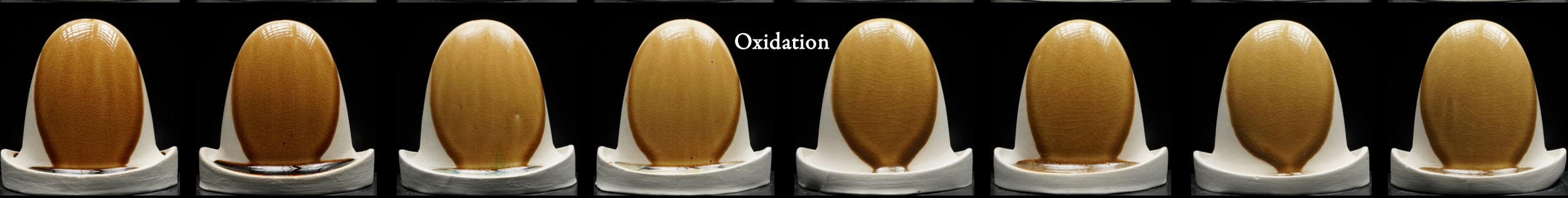
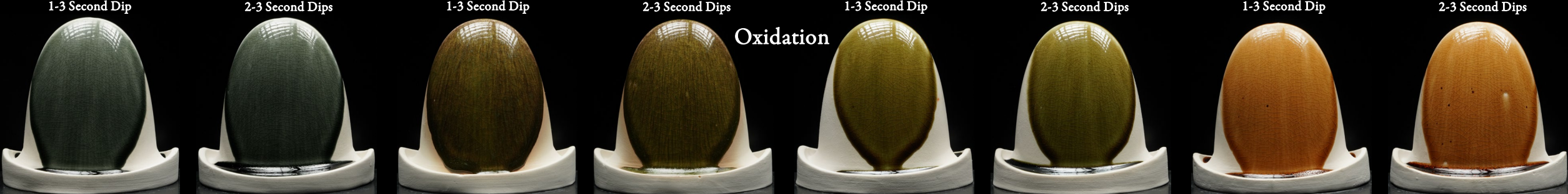


Ceramic  
Materials  
Workshop

# Copper Carbonate 3%

[ceramicmaterialsworkshop.com](http://ceramicmaterialsworkshop.com)



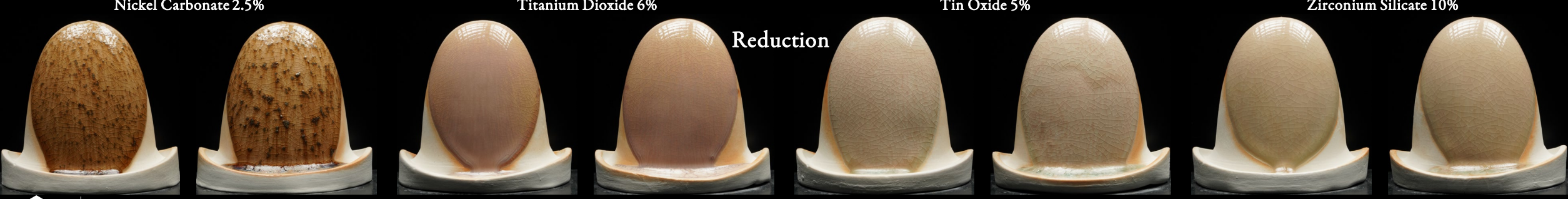
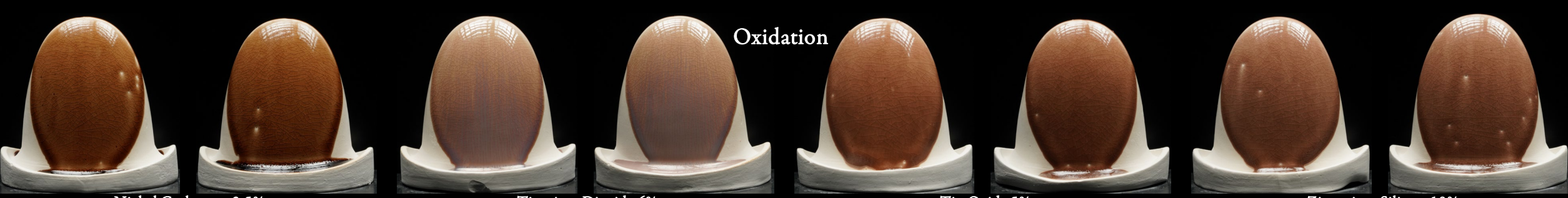


Ceramic  
Materials  
Workshop

# Red Iron Oxide 6%

[ceramicmaterialsworkshop.com](http://ceramicmaterialsworkshop.com)





Ceramic  
Materials  
Workshop

# Manganese Dioxide 3%

[ceramicmaterialsworkshop.com](http://ceramicmaterialsworkshop.com)





Ceramic  
Materials  
Workshop

# Nickel Carbonate 2.5%

[ceramicmaterialsworkshop.com](http://ceramicmaterialsworkshop.com)



1-3 Second Dip

2-3 Second Dips

1-3 Second Dip

2-3 Second Dips

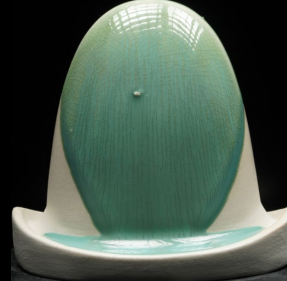
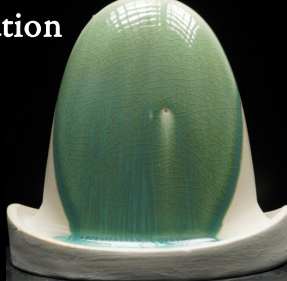
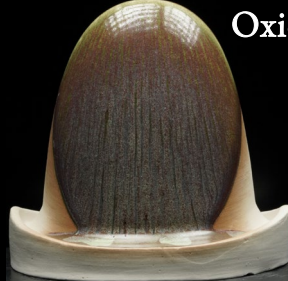
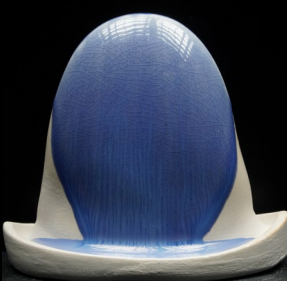
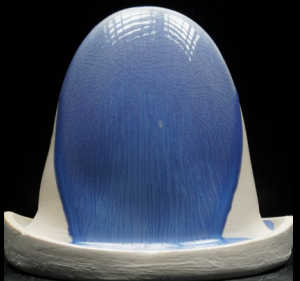
1-3 Second Dip

2-3 Second Dips

1-3 Second Dip

2-3 Second Dips

Oxidation



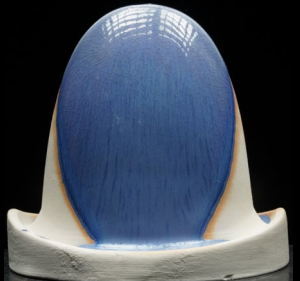
Cobalt Carbonate 1%

Chrome Oxide 1%

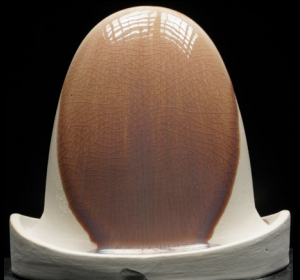
Copper Carbonate 3%

Red Iron Oxide 6%

Reduction



Oxidation



Manganese Dioxide 3%

Nickel Carbonate 2.5%

Tin Oxide 5%

Zirconium Silicate 10%

Reduction



Ceramic  
Materials  
Workshop

# Titanium Dioxide 6%

[ceramicmaterialsworkshop.com](http://ceramicmaterialsworkshop.com)





Cobalt Carbonate 1%

Chrome Oxide 1%

Copper Carbonate 3%

Red Iron Oxide 6%



Manganese Dioxide 3%

Nickel Carbonate 2.5%

Titanium Dioxide 6%

Zirconium Silicate 10%



Ceramic  
Materials  
Workshop

# Tin Oxide 5%

[ceramicmaterialsworkshop.com](http://ceramicmaterialsworkshop.com)



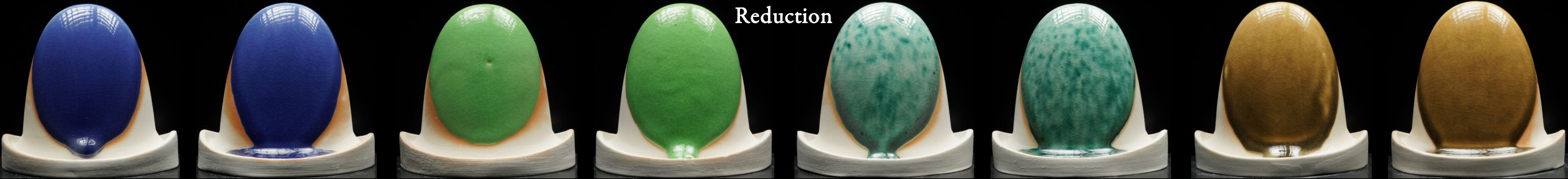


Cobalt Carbonate 1%

Chrome Oxide 1%

Copper Carbonate 3%

Red Iron Oxide 6%



Manganese Dioxide 3%

Nickel Carbonate 2.5%

Titanium Dioxide 6%

Tin Oxide 5%

